




Part No : DDS238-4W
Description : DDS238-4W WIFI type multi-function remote control smart energy meter is used to measure single phase two wire AC active energy and variable parameter. This meter has RS485& WIFI communication function, Especially the WIFI function offer the max. convenience for remotely monitor and controlling by phone APP, and its data communication rules comply with the requirement of MODBUS-RTU & WIFI 802.11b/g/n.

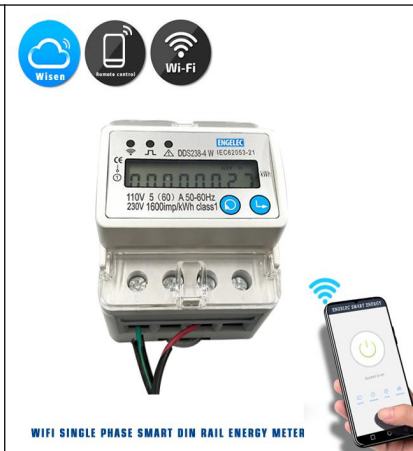
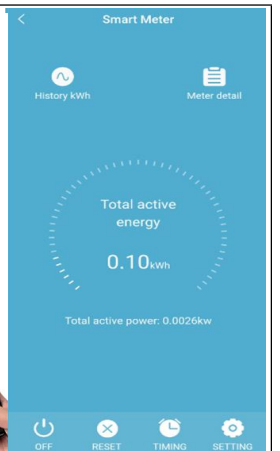
Advantage

- 1) The DDS238-4W WIFI smart energy meter is a class 1 watt hour meter according to standard IEC62052-11& IEC62053-21.
- 2) The Wifi function offers a much convenient and efficient way for people to control and monitor the energy, all info and setting can be operated remotely by phone APP.
- 3) The over-voltage & under-voltage, over-load protection.
- 4) Measuring positive & negative active energy, LCD & APP display real voltage, current, active power, power factor, frequency.

Basic Features

	<p>Rate frequency: 50 or 60 Hz Rated current: 5(60)A Rate voltage: 110V / 220V / 230V (L+N) Nominal voltage range: 90%Un~110%Un Limits voltage range: 70%Un~120%Un kWh Accuracy & R.M.S accuracy : Class 1 & Class 0.5 WIFI : 802.11b/g/n, support 2.4GHz network RS485 port: MODBUS-RTU, 1200~9600bps, default 9600bps Service condition: Ambient temperature between -25℃ ~ +55℃; The relative humidity less than 75%. Service life: >10 years</p>
--	---

Configurable Features

<p>DDS238-4W</p> <p>Delayed power on/off time : 60±5s Event judgement time of over voltage/undervoltage/overload : 3s Overvoltage protection value : 270V+1 (default), APP configurable Overvoltage recovery value : 260V+1 (default), APP setting -10V Undervoltage protection value : 170V±1 (default), APP configurable Undervoltage recovery value : 170V±1, (default), APP setting+10V Overload protection value : 65A (default), APP configurable Delay on/off control : 00:01—24:00 Hour</p>	  <p>WIFI SINGLE PHASE SMART DIN RAIL ENERGY METER</p>
---	---

* The information contained within this datasheet is for guidance only and is subject to change without notice or liability. All the information is provided in good faith and is believed to be correct at the time of publication. The dimension may vary due to manufacturing tolerances.

ENGELEC GROUP

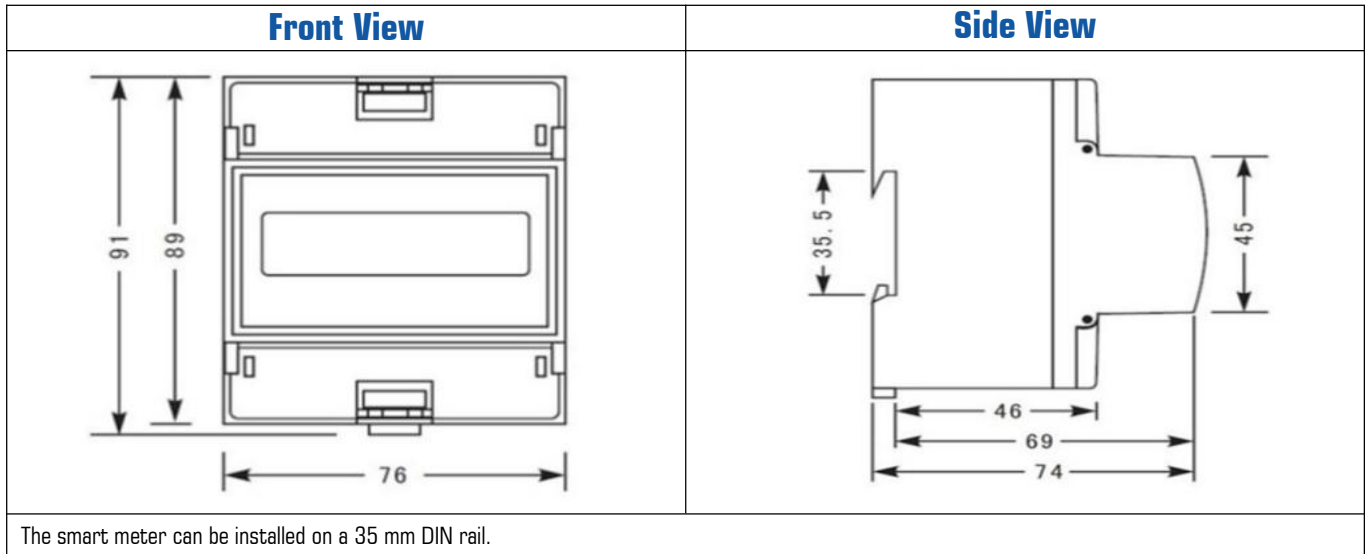
Intelligent manufacturing, Industry 5.0

Email: info@engelec.cn

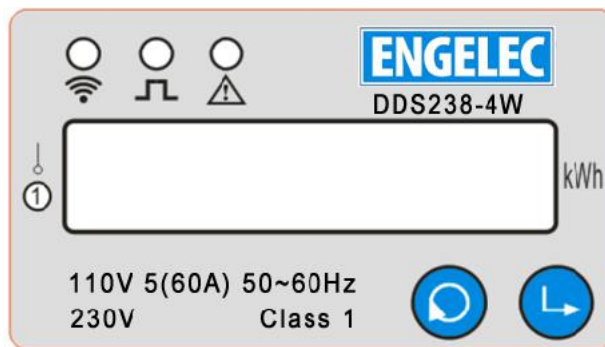
www.engelec.cn

Call at +86 13505876536

Dimension



Schematic diagram



	WiFi LED indicator : If pushing the setting button for 5s, the WIFI LED will flash 1s interval ,it means energy meter is searching for WiFi network; if WiFi LED light on 5s , light off 0.1s ,it means meter connect the WiFi successfully.
	Impulse LED indicator : It will flash with different speed according the current load of the meter
	Relay LED indicator : If the light is off, meaning relay switch on. If the light is on, meaning the relay switch off .
	Function key: Pushing this button to check the different data on display , it will reset the active energy to zero when you push this button last 5s ,but total active energy will not be reset
	Setting key: Pushing the button for 5s, the meter will start to search new WiFi network or reset WiFi.

* The information contained within this datasheet is for guidance only and is subject to change without notice or liability. All the information is provided in good faith and is believed to be correct at the time of publication. The dimension may vary due to manufacturing tolerances.

ENGELEC GROUP

Intelligent manufacturing, Industry 5.0

Email: info@engelec.cn

www.engelec.cn

Call at +86 13505876536