



Part No : DTS238-7W

Description : DTS238-7W WiFi type multi-function remote control smart energy meter is used to measure three phase four wire AC active energy and variable parameter. This meter has RS485& WiFi communication function, Especially the WiFi function offer the max. convenience for remote monitor and controlling by phone APP, its data communication rules comply with the requirement of MODBUS-RTU & WIFI 802.11b/g/n.

Advantage

- 1) The DTS238-7W WiFi smart energy meter is a class 1 watt hour meter according to standard IEC62052-11& IEC62053-21.
- 2) The Wifi function offers a much convenient and efficient way for people to control and monitor the energy, all info and setting can be operated remotely by phone APP.
- 3) The over-voltage, under-voltage, over-load protection.
- 4) Measuring positive & negative active energy, LCD & APP display real voltage, current, active power, power factor, frequency.

Basic Features

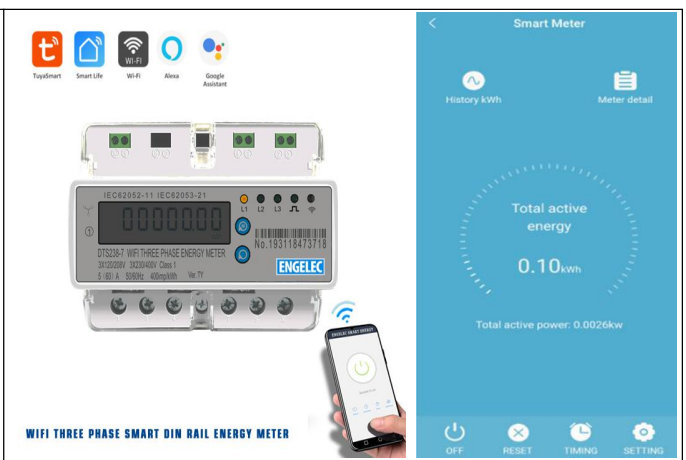


Rate frequency	:	50 or 60 Hz
Rated current	:	1.5(6)A,5A/CT, 5(60)A ,10(80)A
Rate voltage	:	3x120/208V, 3x220/380V, 3x230/400V
Nominal voltage range	:	90%Un~110%Un
Limits voltage range	:	70%Un~120%Un
kWh Accuracy	:	Class 1
R.M.S accuracy	:	Class 0.5
WiFi	:	802.11b/g/n, support 2.4GHz network
RS485 port	:	MODBUS-RTU, 1200~9600bps(def. 9600)
Service life	:	>10 years
Service condition	:	Ambient temperature -25℃~+55℃ The relative humidity < 75%.

Configurable Features

DTS238-7W

Delayed power on/off time	:	60±5s
Event judgement time of over voltage/undervoltage/overload	:	3s
Overvoltage protection value	:	270V+1 (default), APP configurable
Overvoltage recovery value	:	260V+1 (default), APP setting -10V
Undervoltage protection value	:	170V±1 (default), APP configurable
Undervoltage recovery value	:	170V±1, (default), APP setting +10V
Overload protection value	:	65A (default), APP configurable
Delay on/off control	:	00:01—24:00 Hour



* The information contained within this datasheet is for guidance only and is subject to change without notice or liability. All the information is provided in good faith and is believed to be correct at the time of publication. The dimension may vary due to manufacturing tolerances.

ENGELEC GROUP

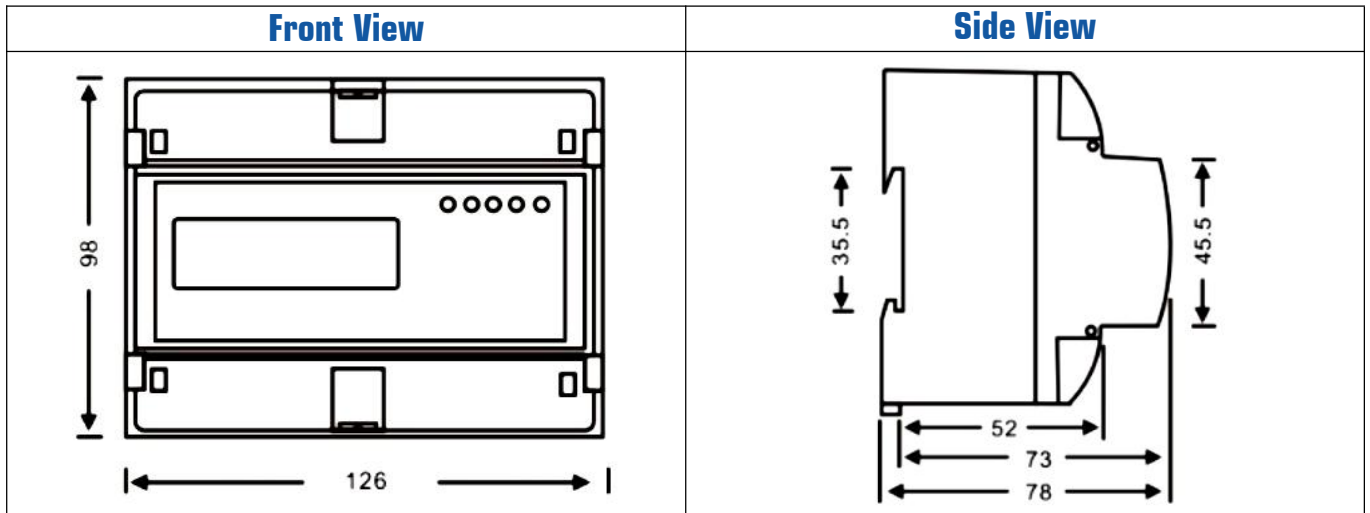
Intelligent manufacturing, Industry 5.0

Email: info@engelec.cn

www.engelecgroup.com

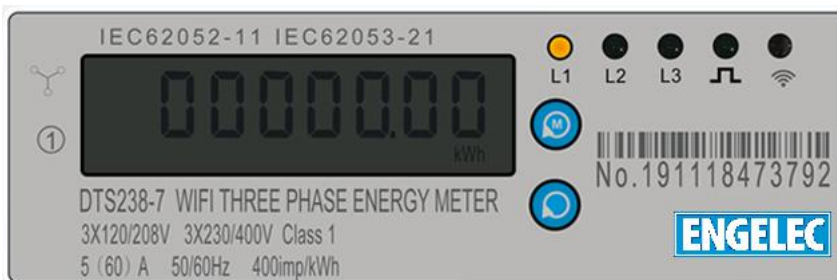
Call at +86 13505876536

Dimension



The wifi smart energy meter can be installed on a 35 mm DIN rail.

Panel Display Instruction



	WiFi LED indicator : If pushing the setting button for 5s, the WiFi LED will flash 1s interval ,it means energy meter is searching for WiFi network; if WiFi LED light on 5s , light off 0.1s ,it means meter connect the WiFi successfully.
	Impulse LED indicator : It will flash with different speed according the current load of the meter
L1	Line 1 (phase A) setting status
L2	Line 2 (phase B) setting status
L3	Line 3 (phase C) setting status
	Function key: Pushing this button to check the different data on display , it will reset the active energy to zero when you push this button last 5s ,but total active energy will not be reset
	Setting key: Pushing the button for 5s, the meter will start to search new WiFi network or reset WiFi.

* The information contained within this datasheet is for guidance only and is subject to change without notice or liability. All the information is provided in good faith and is believed to be correct at the time of publication. The dimension may vary due to manufacturing tolerances.