



ENGELEC POWER TECHNOLOGY CO., LTD

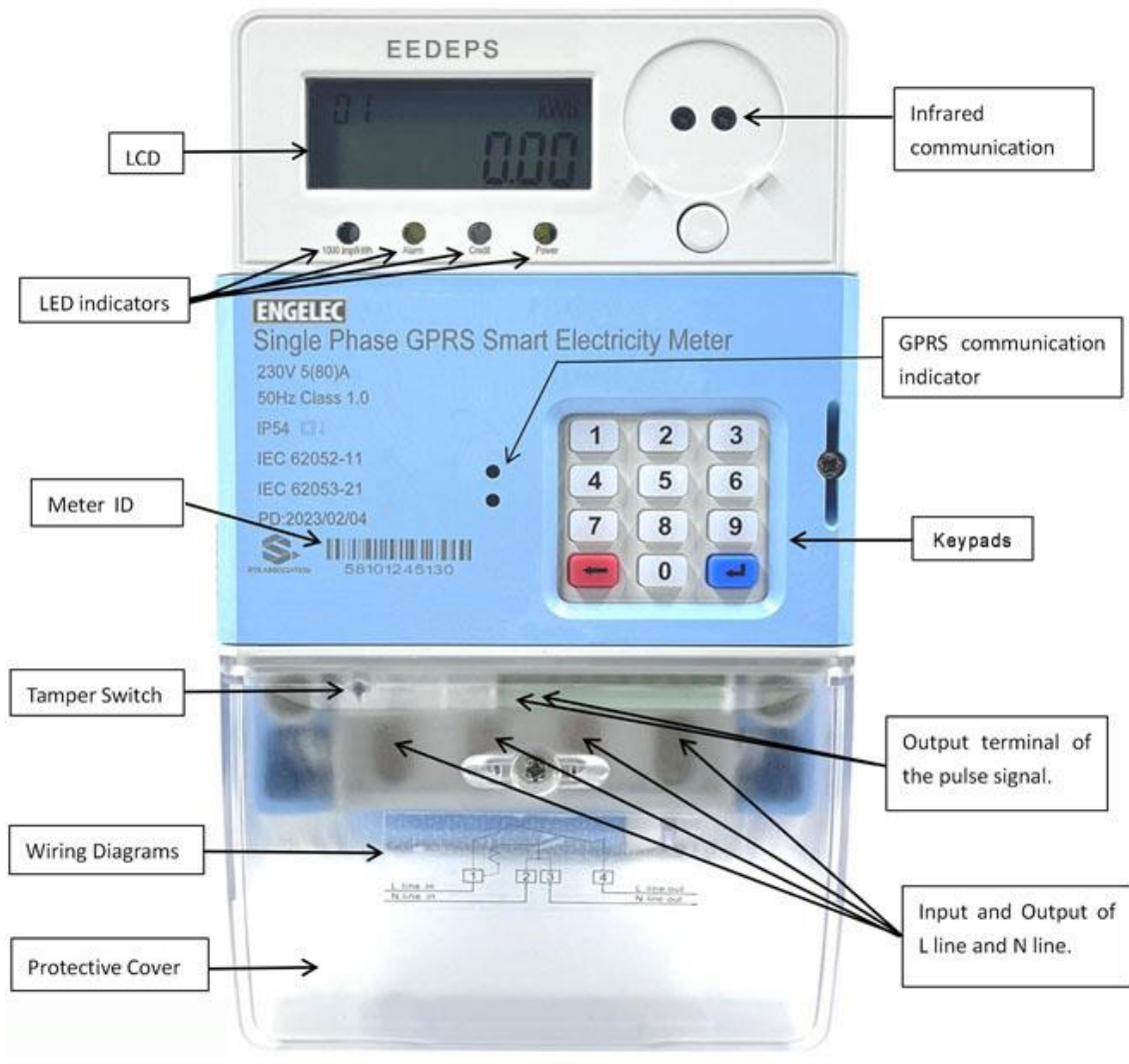
Single Phase Keypad Prepaid Electricity Meter User Manual

Single Phase STS Keypad Prepaid Electricity Meter

GPRS /LORA Wireless

User Manual

Structure & Main Components:



- **LED indicators:**
 - ◆ "1000imp/kWh": Pulse light, when the meter works normally after being connected to the load, it shows blue light, and every 1000 flashes is 1 kWh.
 - ◆ "Alarm": Warning light, when the meter in the tamper state or the balance is zero, it shows yellow light.
 - ◆ "Credit": When the credit balance is sufficient, it shows green light; when the balance is 0, it shows red light.
 - ◆ "Power": It lights up when the meter is powered on. The green light means the sufficient credit, the red light means the credit is 0.
- **Tamper Switch:** Tamper protection function. When the cover is opened, the meter is in the tamper state, it shows yellow light.
- **Meter ID** (Serial Number): It's a solo serial number/ ID to each meter.
- **Keypads:** Checking data from meter by pressing the button, and inputting the tokens (Recharge, Clear Credit and Clear Tamper Token).
- **SIM card slot:** Insert sim card for GSM wireless control and monitor.

Technical Parameters

Description		Technical data
Model		EEDEPS
Nominal Voltage		240V
Working Voltage Range		70%~120%Un
Frequency		50Hz
Basic Current (Ib)		5A
Maximum Current (Imax)		60A
Starting Current(Ist)		20mA
Active Energy Constant		1000imp/kWh
Power Accuracy		Class 1.0
Power Consumption in Voltage Circuit		<2W <8VA
Power Consumption of in Current Circuit		<1VA
Operation Temperature Range		-25℃ - 70℃
Storage Temperature Range		-40℃ - 85℃
Communication		433RF, GPRS
Dimension		180.2mm×120mm×55.7mm
Weight		464.5g
Waterproof Level		IP54
Battery Voltage		3.3V
Sleep Current		0.2mA
AC Insulation Strength		4kV / 50Hz during 1min
Impulse voltage1.2/50 us mains connection		8kV
Electrostatic Discharge	Contact Discharge	8kV
	Air discharge	16kV
Insulation Electromagnetic RF Field	27MHz~500MHz	10V/m
	100kHz-1GHz	30V/m
Fast Transient Burst Test		4kV
Protection level		Class II

Functions

➤ Keypad Control :

Input digit token to check the data, recharge, clear tamper and clear credit operations of the STS prepaid meter.

➤ Remote Communication:

The single phase prepaid electricity meter has built-in SIM card slot, the user can insert SIM card to the meter directly to use GSM remote communication. Or choose our Lora-RF data collector to connect 300 pcs meter for remote communication. The user can monitor and recharge on the ENGELEC vending system web.

➤ Anti-Tamper:

When the transparent protective cover opened, the tamper switch is triggered, the valve will be closed and the "Warning" indicator will show yellow light. It can prevent electricity theft.

➤ Credit Alarming:

The "Credit" indicator flashes red light when the meter has insufficient credit. The "Alarm" indicator shows yellow light when the credit is zero.

Display Codes

S/N	Description	LCD Display
1	"ACCEPT" means the Token could be accepted by the energy meter.	ACCEPT
2	"REJECT" means the Token is wrong ,it's refused by the energy meter.	REJECT
3	"USED" means the input Token has been used before and cannot be reused.	USED
4	"OLD" means the input Token is expired and need a new token.	OLD
5	"NULL" means the input command is not defined.	NULL
6	"Err_06" means the entered token is wrong	Err_06
7	"OVER PO" means the consumption exceeds the overdraft, the power will be cut off within the specified time.	Over Po

Operation Codes

Display number	Description	Display number	Description
01	Cumulative kWh consumption	02	Cumulative total reverse kWh
03	Voltage	04	Current
05	NULL	06	Cumulative purchased amount
07	Residual amount	08	TOU residual credit
09	Date (year/month/day)	10	Time (hour/minute/second)
11	The alarm threshold 1	12	The alarm threshold 2
13	Load threshold	14	NULL
15	Daily cumulative kWh Consumption	16	Overload trip delay time
19	Power consumption of last month	20	Power consumption of last 2nd
21	Power consumption of last 3rd	22	Power consumption of last 4th month
23	Power consumption of last 5th	24	Power consumption of last 6th month

25	Power consumption of last 7th	26	Power consumption of last 8th month
27	Power consumption of last 9th	28	Power consumption of last 10th
29	Power consumption of last 11th	30	Power consumption of last 12th
31	Real time power	32	Phase A power(kWh)
33	Phase B power(kWh)	34	Phase C power(kWh)
39	NULL	40	The number of cover meter open
41	The last cover open time	42	The last 2nd cover open time
43	The last 3rd cover open time	44	The last 4th cover open time
45	The last 5th cover open time	46	The number of overload break power
47	The last overload time	48	The last 2nd overload time
49	The last 3rd overload time	50	The last 4th overload time
51	The last 5th overload time	52	The number of power down
53	The last power downtime	54	The last 2nd power down time
55	The last 3rd power down time	56	The last 4th power down time
57	The last 5th power down time	64	Monthly Consumption
65	Meter ID High Bit	66	Meter ID Low Bit
69	NULL	76	The last 1 power purchase TOKEN
77	The last 2 power purchase TOKEN	78	The last 3 power purchase TOKEN
79	The last 4 power purchase TOKEN	80	The last 5 power purchase TOKEN
81	Last 1th credit kWh	82	Last 2nd credit kWh
83	Last 3rd credit kWh	84	Last 4th credit kWh
85	Last 5th credit kWh	86	Total number of token accepted

Installation Notices

- Generating a recharge token on vending software, then input the token by the meter keypad or remote charging. The LCD screen shows “**R[[EP]**”, it means credit is charged to the meter successfully. The user can check it by input “07+Enter” to check the residual credit on keypad.
- Now the meter starts to work normally.